

Silver Streak

Presents



CLIPPER 25'

THE
Clipper
MODEL 25

Clipper
MODEL 22

The lightest and strongest trailer of its size in the world. Designed for travel and living. It is built by aircraft engineers and craftsmen especially for those experienced trailer enthusiasts who appreciate what light weight flexibility means.



The Famous CLIPPER 22'

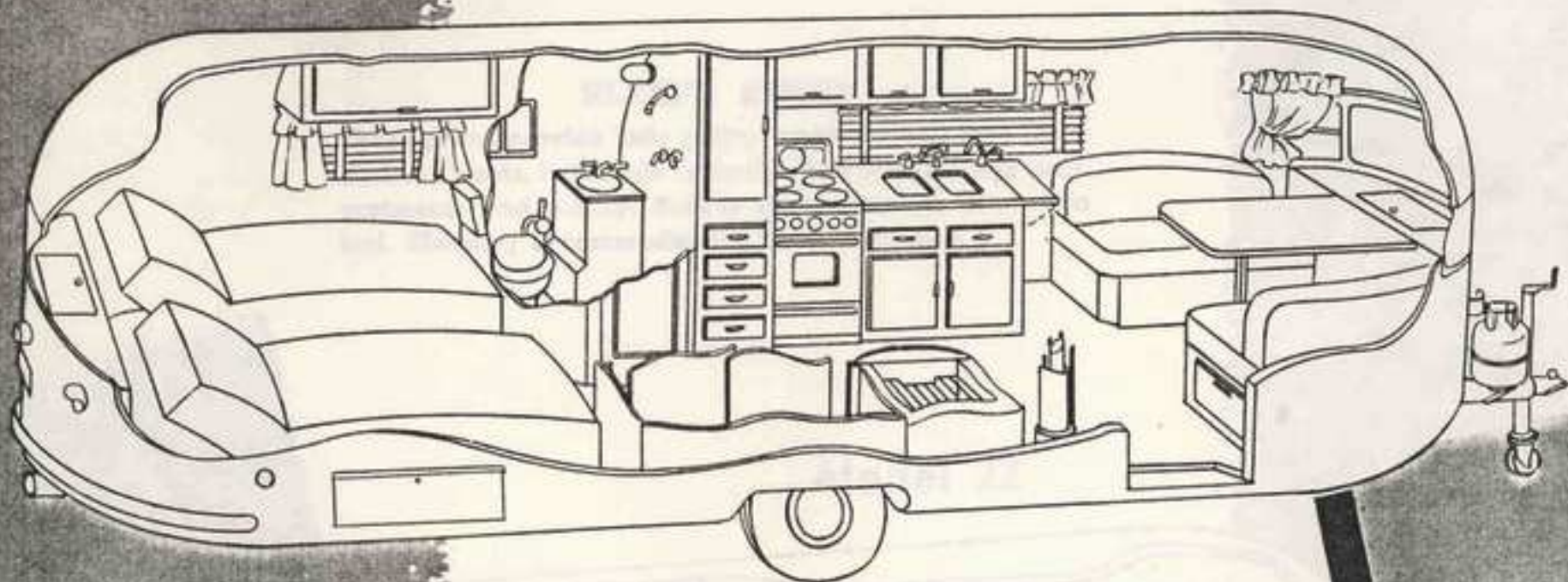
SILVER STREAK TRAILER CO.

2404 N. CHICO

EL MONTE, CALIF.

Model 25

The 25' Clipper is constructed the same as our world famous 22' Clipper. All metal riveted aircraft construction except floor and cabinet doors. All steel welded and riveted chassis. Steel bumper.



Overall Width	7' 4"	Body Height	8' 9"
Overall Length	25'	Inside Height	6' 8"
Body Length	23'	Hitch Weight	250 lbs.

Overall Weight approx. 3200 lbs.

Here's amazing strength of construction! It's so perfectly stressed and designed with a minimum of air resistance that you zoom over hills in high . . . over straight stretches . . . as fast as you care to go. Don't worry about furnishings or built-in features for bracing or balance of any kind. Place the furniture **wherever** you want it. The velvet-smooth Clipper takes the hard knocks as **easily** as you expect. Easy to hook on . . . unhook . . . push around. Unless you look behind, **you hardly know the Clipper is there!** Travel luxury at its peak! You can be sure with a Clipper!

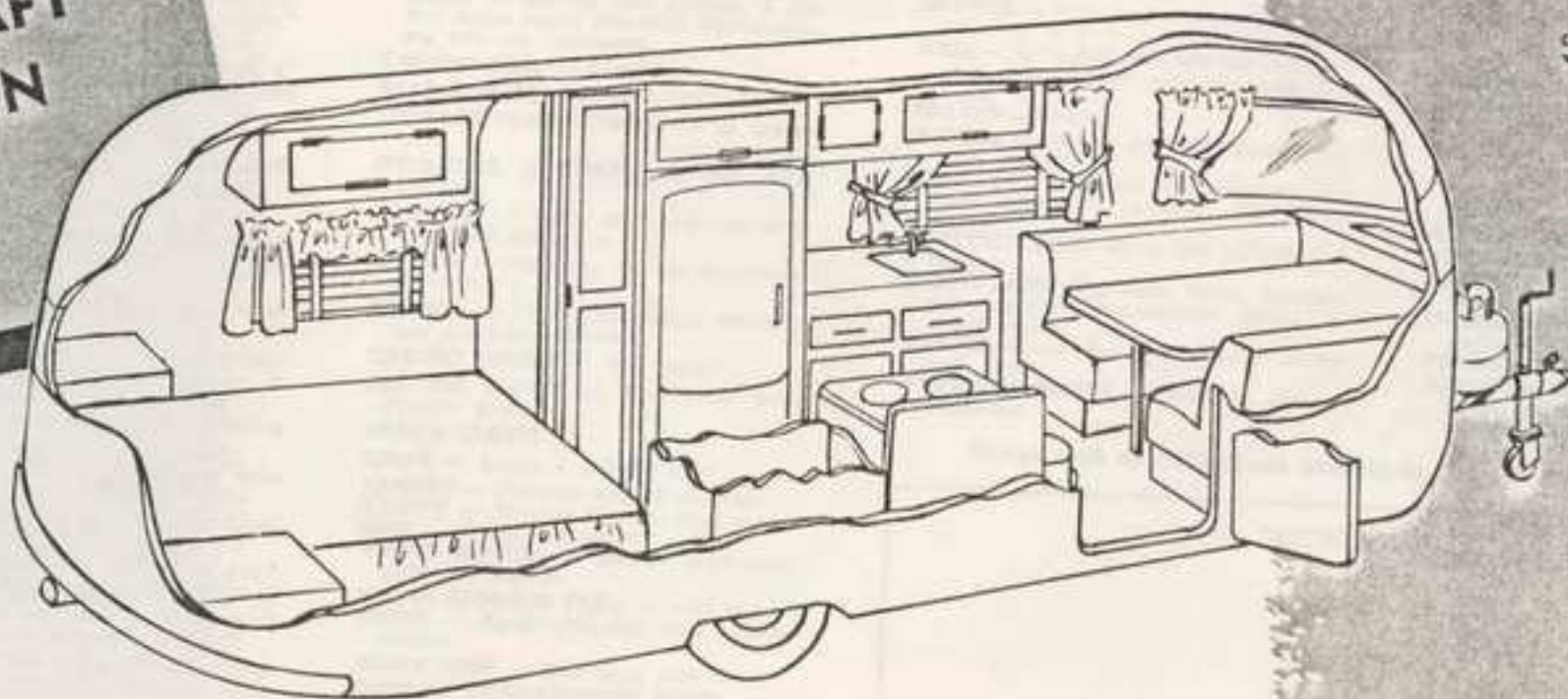
ALL METAL
RIVETED
CONSTRUCTION

METAL
AIRCRAFT
CONSTRUCTION

SLEEPS FOUR

These plans provide side galley arrangement. Two large clothes closets, twin beds or double bed with storage compartments and vanity. Built-in dinette makes into extra bed. Sleeping accommodations for four people.

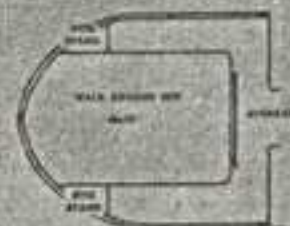
Model 22



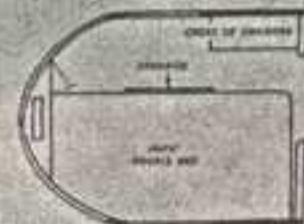
Overall Width	7' 2"	Body Height	8' 4"
Overall Length	22'	Inside Height	6' 2 1/2"
Body Length	20'	Hitch Weight	175 lbs.

Overall Weight approx. 2424 lbs.

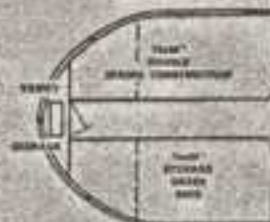
YOUR CHOICE OF FLOOR PLANS



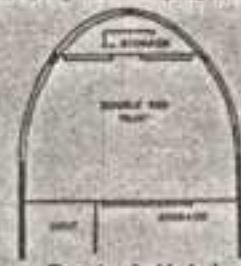
Island Bed



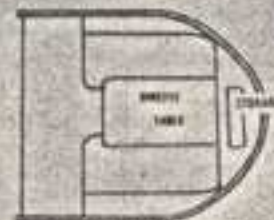
Bed along side



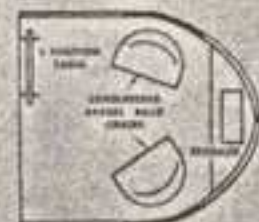
Choose lounge, twin beds or twin beds with box spring and louvering mattress.



King size double bed



Built-in dinette (seats)

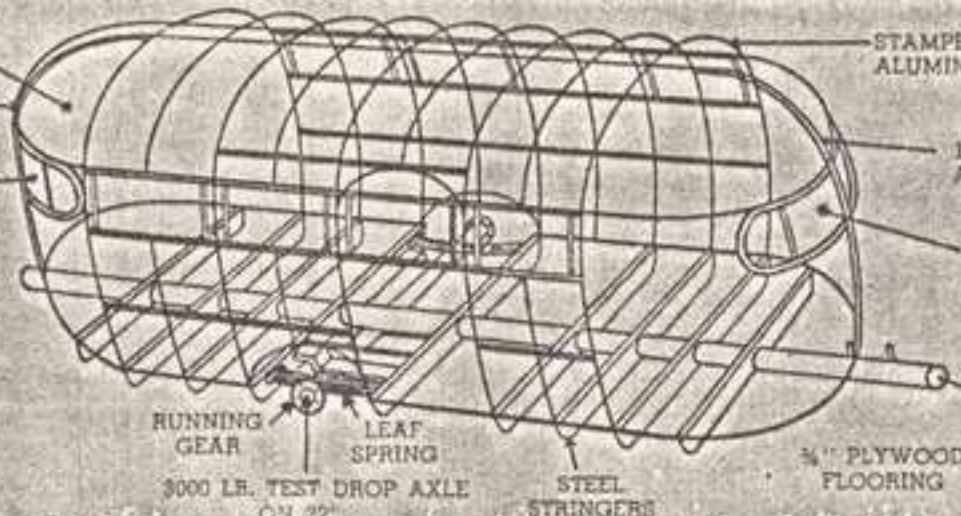


Upside-down barrel back chairs (seats)

ENTIRE TRAILER INSULATED WITH 1" PLASTICIZED SPUN GLASS

1 1/2" HEAT TREATED ALUMINUM TUBING

LUCITE



STAMPED HEAT-TREATED ALUMINUM RIBS

1 1/2" HEAT TREATED ALUMINUM TUBING

LUCITE WINDOWS

4" HEAVY STEEL TUBING

3/4" PLYWOOD FLOORING

STEEL STRINGERS

LEAF SPRING

RUNNING GEAR

3000 LB. TEST DROP AXLE ON 22"

25' CLIPPER SPECIFICATIONS

HITCH — Atwood 2" Ball and socket. Host is Marvel with concealed gears.

CENTER POLE — 4"x8 gauge steel tubing.

DOUBLE FLOOR has 6" space, insulated with plastic treated fiber glass.

FLOOR is 3/4" plywood with inlaid linoleum trim.

BOTTOM is completely sealed and covered with metal skin.

SPRINGS — Nine leaf, heavy-duty automotive steel attached to 4"x1/2" channel iron.

AXLE — 2" steel 4000 lb. test with 4" drop axle, heavy duty bearings and hubs.

BRAKES — Electric.

WHEELS — Heavy-duty flat base truck type 15x5.50.

TIRES — 700-15 6-ply heavy duty.

ROOF BOWS — or ribs are stamped out heat treated U Channel .040 aluminum.

EXTERIOR SKIN — 24 st. .032 alclad aluminum.

INSIDE SKIN — .032 satin finish, painted our famous Hammerstone finish in tinted colors.

DRAPES — Your choice of many colors and trim.

VENETIAN BLINDS — Metal on side windows.

REFRIGERATOR — Marvel Combination.

DOOR — Airplane type 26" wide fully insulated with large screen door.

VENTS — Hehr easy action telescoping with removable screens, 3 in all.

WINDOWS — French type opening end windows, 10 opening windows in all, 4 non-opening.

INSULATION — Plasticized fiber glass, with chrome lock tape between all ribs and stringers and inside skin.

BUTANE TANKS — 2 with switch over valve and regulator.

LIGHTS — Four side amber lights, stop and tail light, directional turning lights.

WIRING — 12 gauge plastic coat to all 110 outlets, with circuit breaker, 18 gauge to all six volt system, 2 six volt dome lights standard equipment, six volt car connector.

AWNING RAIL — Regular.

REAR BUMPER — Steel 1/2"x2"

STORAGE COMPARTMENT — in center pole.

OVERHEAD CABINETS — Six with shelves.

FORMICA — Table and Sink top with drop leaf extension.

HEATER — Panelray gas or duo-therm oil heater.

SHOWER — Flush type toilet, lavatory and medicine cabinet.

CABINET DOORS — 3/4" birch.

CLOTHES CLOSET — 4 1/2' long with double doors.

BROOM CLOSET

CHEST — Large 4 drawer unit.

PANTRY — Storage with 3 shelves.

VANITY — Storage in front and rear.

SINK — Double porcelain.

WATER HEATER — Electric with pilot light and switch.

WATER STORAGE TANK — with pump.

STOVE — Apartment size with broiler (Dixie).

STOVE VENT — Box type with fan.

OUTSIDE COMPARTMENT DOOR.

OUTSIDE ENTRANCE LIGHT.

22' CLIPPER SPECIFICATIONS

HITCH — Atwood 2" ball and socket. Host is Marvel with concealed gears.

CENTER POLE — 4"x11 gauge steel tubing.

DOUBLE FLOOR has 6" space, insulated with plastic treated fiber glass.

FLOOR is 3/4" plywood with inlaid linoleum covering.

BOTTOM is completely sealed and covered with metal skin.

SPRINGS — Nine leaf automotive steel, attached to 4" x 1/2" channel iron.

AXLE — 1 1/2" steel, 3000 lb. test with 4" drop axle. Heavy duty bearings and hubs.

BRAKES — Electric.

WHEELS — Heavy duty flat base truck type 15x5.50.

ROOF BOWS or ribs are stamped out heat treated U channel, .040 aluminum.

EXTERIOR SKIN — 24 st .032 alclad aluminum.

INSIDE SKIN — .032 satin finish, painted our famous hammerstone finish in tinted colors.

DRAPES — Your choice of many colors and trim.

VENETIAN BLINDS — Metal on side windows.

50 LB. ICE BOX — Standard equipment. Electric optional at extra cost.

DOOR — Airplane type, 26" wide, fully insulated with large screen door.

VENTS — Hehr easy action telescoping with removable screens.

WINDOWS — Duo pane on sides 1 1/4" lucite on front and rear windows.

INSULATION — Plasticized fiber glass, with chrome lock tape between all ribs and stringers and inside skin.

BUTANE TANK attached to frame, 5 gals., ICC with regulator.

LIGHTS — Four side amber lights, stop and tail light, and directional turning lights.

WIRING — 12 gauge plastic coat to all 110 outlets with circuit breaker, 18 gauge to all six volt system, 6 volt dome light standard equipment.

AWNING RAIL — Regular.

REAR BUMPER — Steel, 1/2" x 2".

STORAGE COMPARTMENT in center pole.

OVERHEAD CABINETS — Six, with shelves.

FORMICA TABLE TOP.

BUTANE WALL HEATER standard equipment. Oil or panel ray, optional at extra cost.

Prices and specifications subject to change without notice.

DISTRIBUTED BY

SILVER STREAK TRAILER CO.

2404 N. Chico, El Monte, California

Phone FOrest 02646