

Silver Streak

Presents

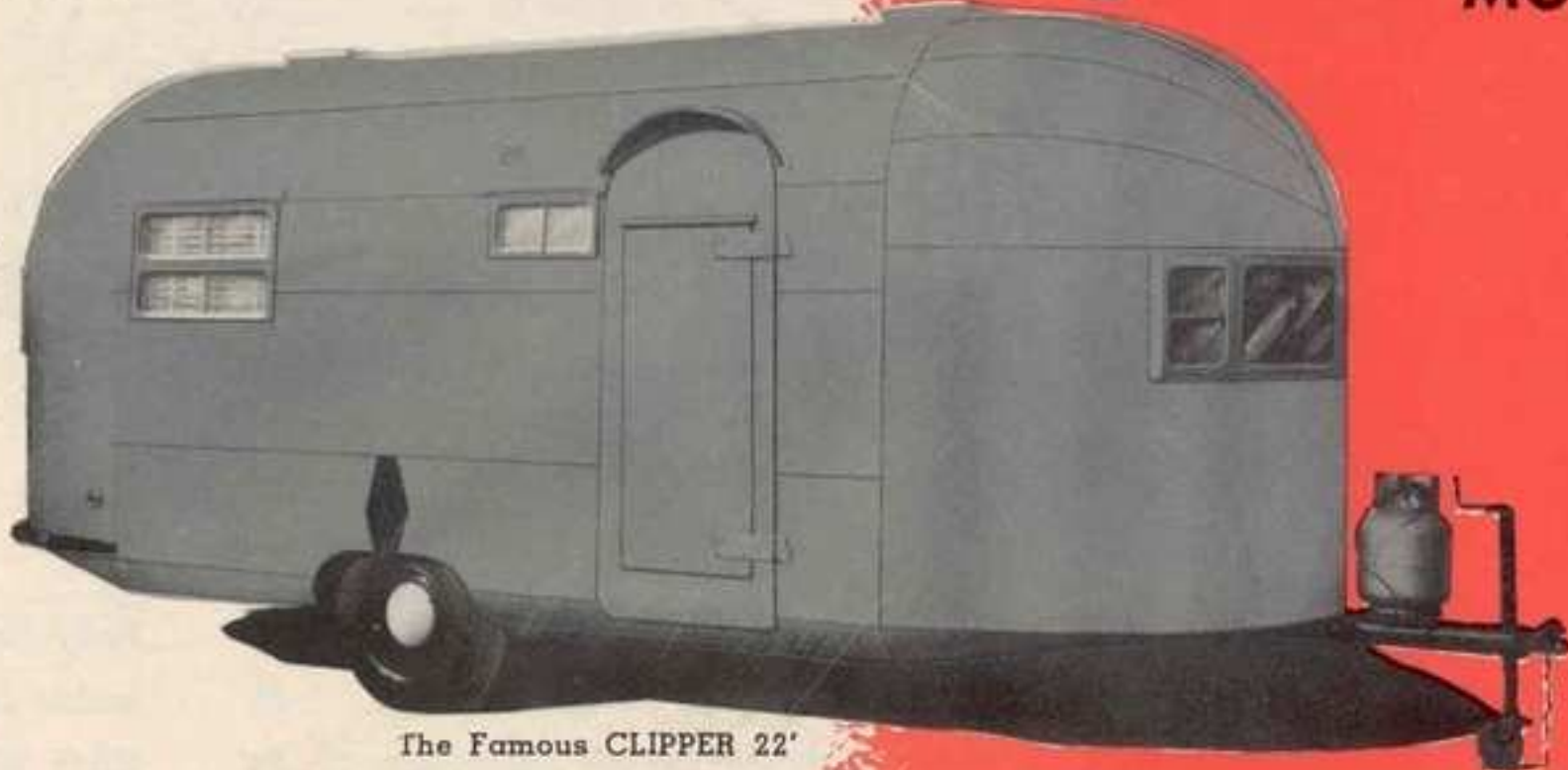


CLIPPER 25'

THE
Clipper
MODEL 25

Clipper
MODEL 22

The lightest and strongest trailer of its size in the world. Designed for travel and living. It is built by aircraft engineers and craftsmen especially for those experienced trailer enthusiasts who appreciate what light weight flexibility means.



The Famous CLIPPER 22'

SILVER STREAK TRAILER CO.

2404 N. CHICO

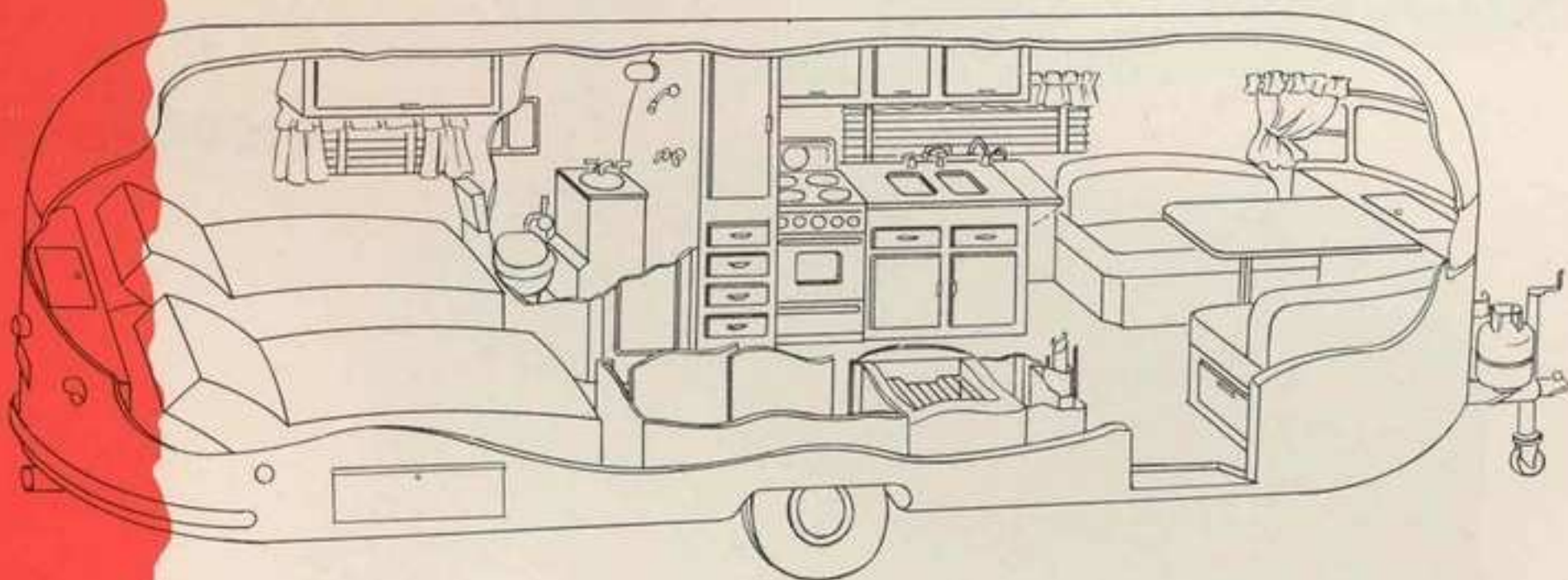
EL MONTE, CALIF.

ALL METAL RIVETED AIRCRAFT CONSTRUCTION

Here's amazing strength of construction! It's so perfectly stressed and designed with a **minimum** of air resistance that you zoom over hills in high . . . over straight stretches . . . as fast as you care to go. Don't worry about furnishings or built-in features for bracing or balance of any kind. Place the furniture **wherever** you want it. The velvet-smooth Clipper takes the hard knocks as **easily** as you expect. Easy to hook on . . . unhook . . . push around. Unless you look behind, **you hardly know the Clipper is there!** Travel luxury at its peak! You can be sure with a Clipper!

MODEL 25

The 25' Clipper is constructed the same as our world famous 22' Clipper. All metal riveted aircraft construction except floor and cabinet doors. All steel welded and riveted chassis. Steel bumper.



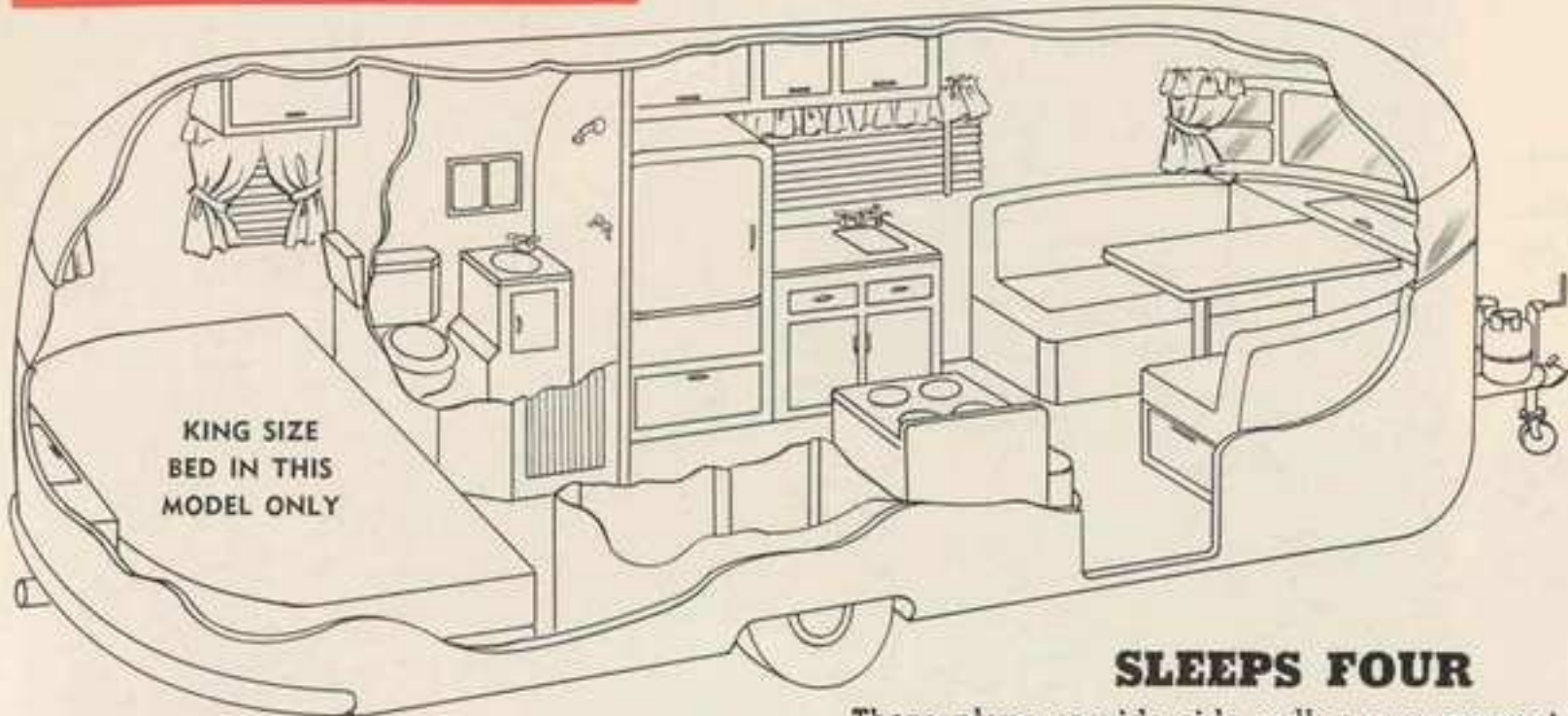
Overall Width	7' 4"	Body Height	8' 9"
Overall Length	25'	Inside Height	6' 8"
Body Length	23'	Hitch Weight	250 lbs.

Overall Weight approx. 3200 lbs.

A MODEL AND ARRANGEMENT

MODEL 22 WITH SHOWER

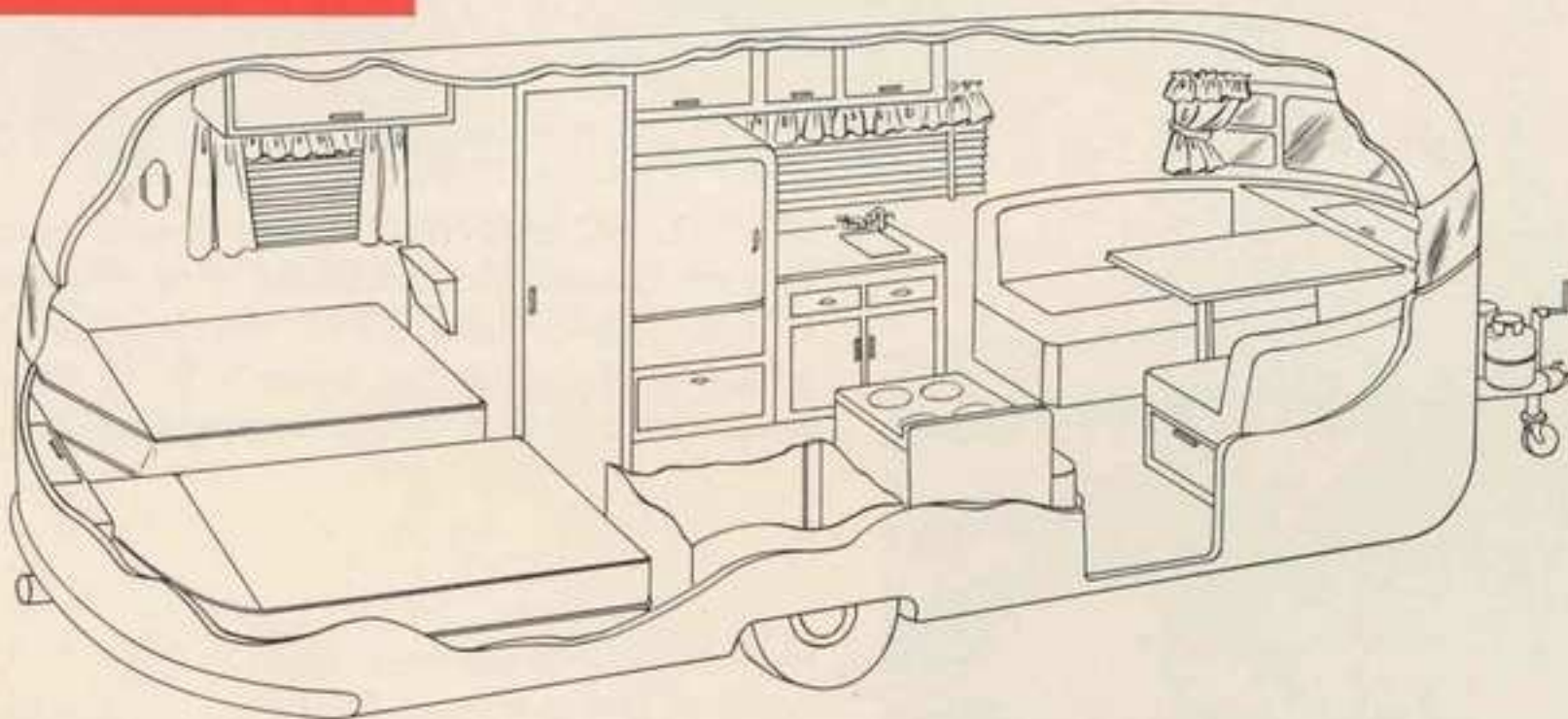
Overall Width 7' 4"
 Overall Length 22'
 Body Length 20'
 Body Height 8' 9"
 Inside Height 6' 8"
 Hitch Weight 250 lbs.
 Overall Weight approx. 2900 lbs.



SLEEPS FOUR

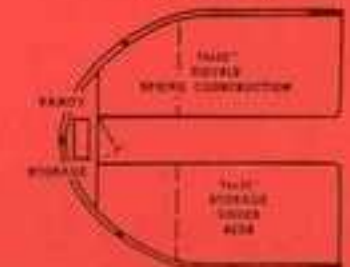
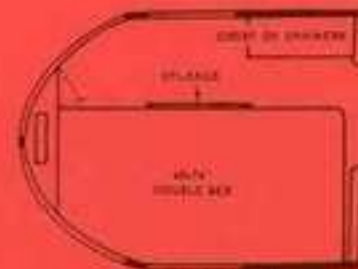
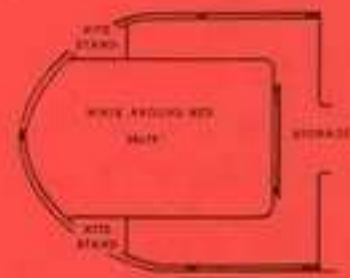
These plans provide side galley arrangement. Two large clothes closets, twin beds or double bed in Model 22, with storage compartments and vanity. Built-in dinette makes into extra bed. Sleeping accommodations for four people.

MODEL 22

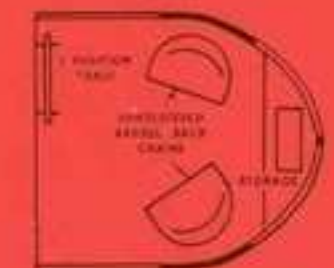
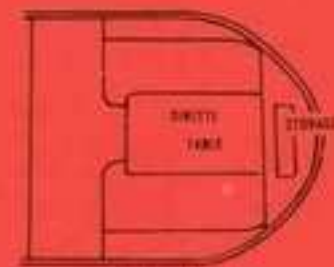


Overall Width 7' 4"
 Overall Length 22'
 Body Length 20'
 Body Height 8' 9"
 Inside Height 6' 8"
 Hitch Weight 225 lbs.
 Overall Weight Approx. 2424 lbs.

YOUR CHOICE OF FLOOR PLANS



Choose lounge, twin beds or twin beds with box spring and innerspring mattress.

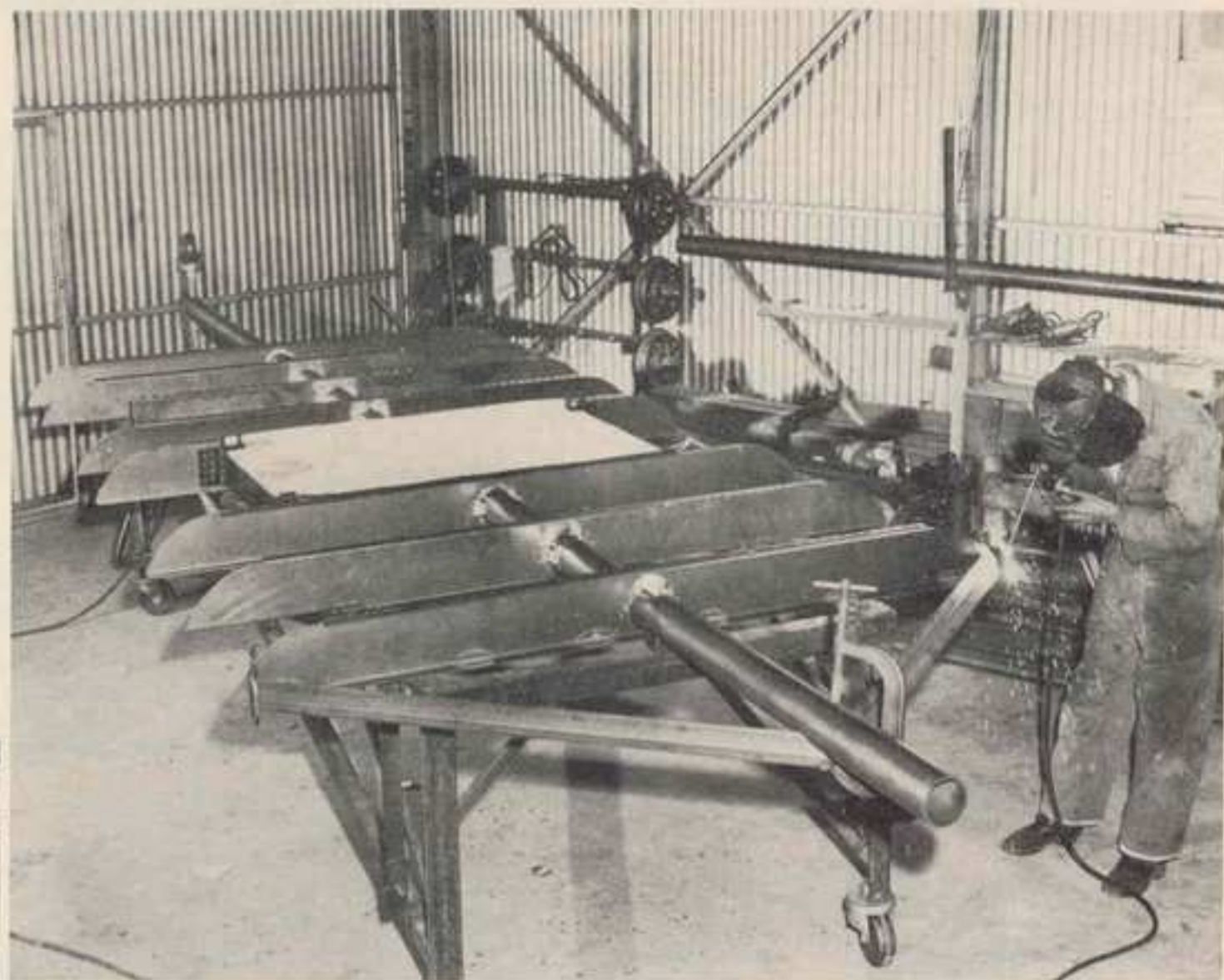


ARRANGEMENT FOR YOU

BUILDING THE RIVETED TRAILER

The Clipper trailer coach is designed for traveling, is light in weight, sturdy in construction, and still retains the features which make living comfortable in a modern mobile home.

The Clipper features construction which is practically all metal with the use of rivets instead of screws or nails. Wood is used only on the faces of cabinets, sink surfaces, and of course in the floor.



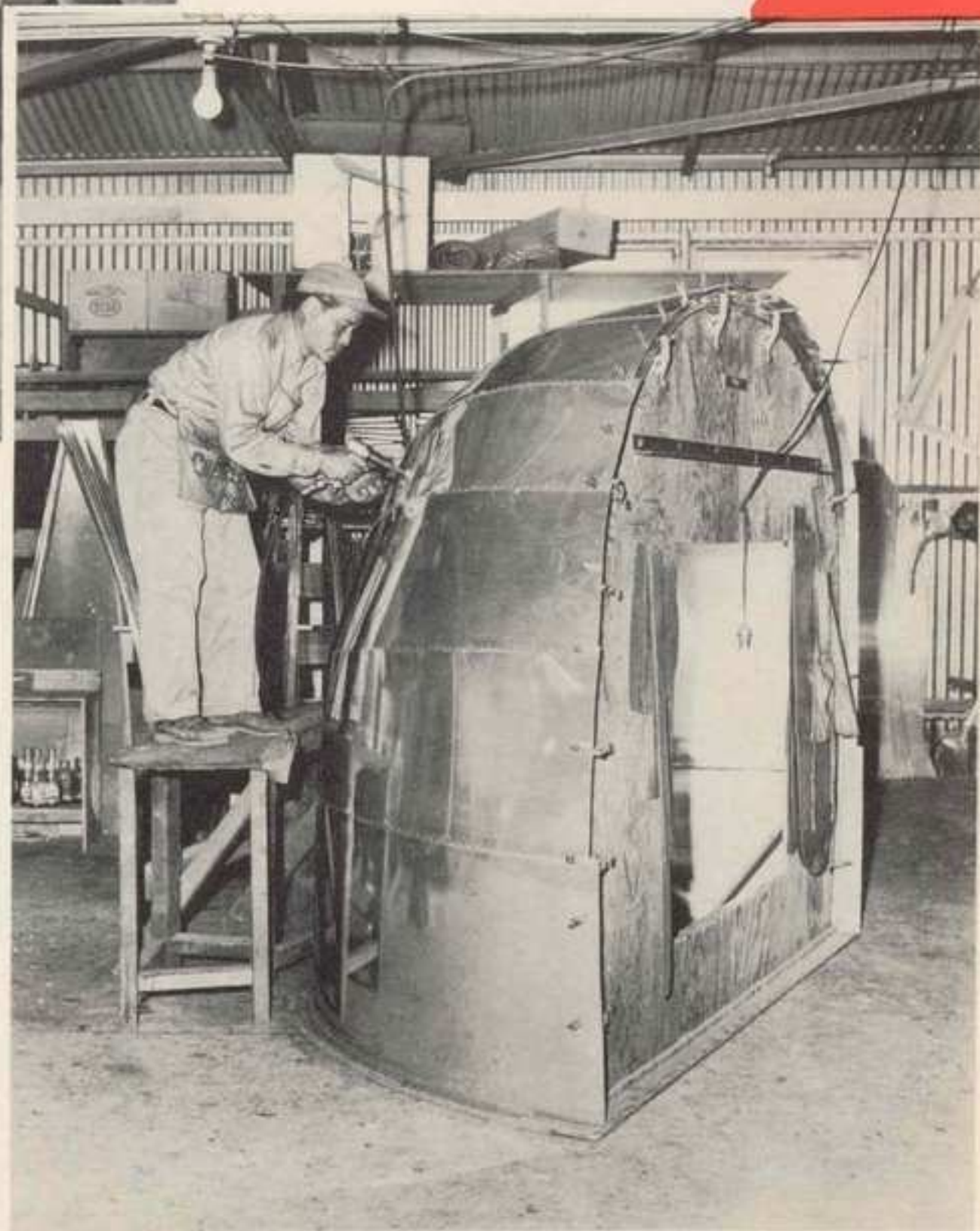
LIFETIME GUARANTEE — Silver Streak builds its own chassis. The backbone is an 8 gauge, 4" O. D. steel tubing. Cross members are 18 gauge 6" channels. Box frame is 6" 18 gauge steel. Axle channels 4" 5.4. Chassis is welded.

The Clipper's running gear and chassis is wrapped in metal. Note that the frame is completely covered with metal.

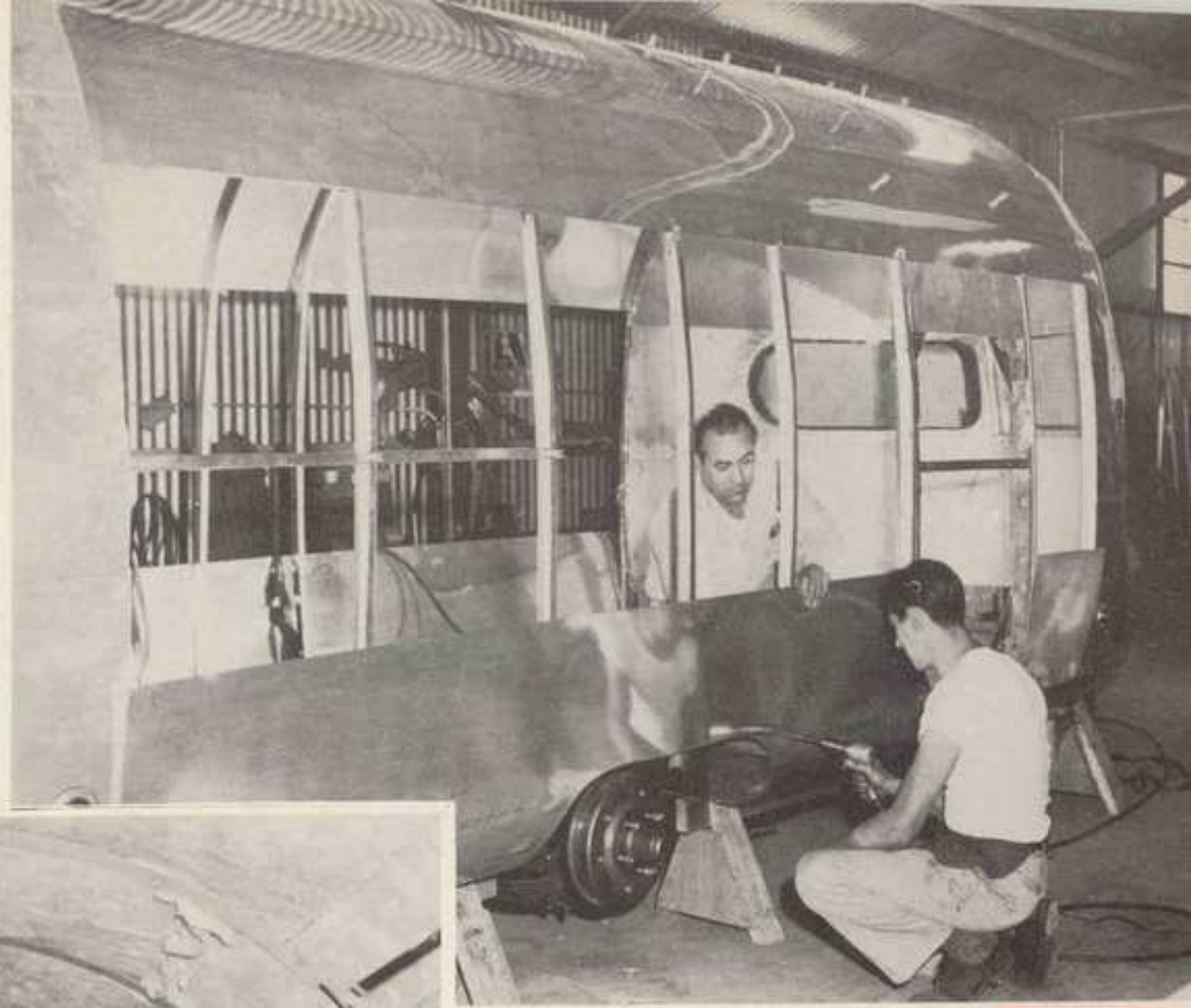


This is a posed shot. Ordinarily all of the plasticised fiberglass insulation would be put in place before any of the floor was installed. This picture shows how the metal covering the chassis is in place ready to wrap around the body of the coach.

Bow and stern of the trailer are riveted together on jigs. Later they will be lifted on to the chassis. When riveting is completed, windows are installed. These are seated in plastigum, which will not dry or harden, thus acting as a precautionary.



The ribs are placed in position and the sides are being riveted on. These ribs are aluminum treated for extra strength.



Plasticised fiberglass being installed on roof and sides. To keep heat and cold from traveling, all ribs and stringers are coated with chrome locked tape. Note the 12 gauge plastic coated wire to all 110 volt outlets, and the double strand 18 gauge to all 6 volt outlets.

These machines "break" the metal, thus giving it greater structural strength.



Now the prefabricated metal cabinets, a feature of The Clipper, are installed.



Cabinets are prefabricated, and inspection is continuous.

SPECIFICATIONS

25' CLIPPER

HITCH — Atwood 2" Ball and socket. Hoist is Marvel with concealed gears.

CENTER POLE — 4"x8 gauge steel tubing.

DOUBLE FLOOR has 6" space, insulated with plastic treated fiber glass.

FLOOR is $\frac{3}{4}$ " plywood with inlaid linoleum trim.

BOTTOM is completely sealed and covered with metal skin.

SPRINGS — Nine leaf, heavy-duty automotive steel attached to 4"x $\frac{1}{4}$ " channel iron.

AXLE — 2" steel 4000 lb. test with 4" drop axle, heavy duty bearings and hubs.

BRAKES — Electric.

WHEELS — Heavy-duty flat base truck type 15x5.50.

TIRES — 700-15 8-ply heavy duty.

ROOF BOWS — or ribs are stamped out heat treated U Channel .040 aluminum.

EXTERIOR SKIN — 24 st. .032 Alclad aluminum.

INSIDE SKIN — .032 satin finish, painted our famous Hammertone finish in tinted colors.

DRAPES — Your choice of many colors and trim.

VENETIAN BLINDS — Metal on side windows.

REFRIGERATOR — Marvel Combination.

DOOR — Airplane type 26" wide fully insulated with large screen door.

VENTS — Hehr easy action telescoping with removable screens, 3 in all.

WINDOWS — French type opening end windows, 10 opening windows in all, 4 non-opening.

INSULATION — Plasticized fiber glass, with chrome lock tape between all ribs and stringers and inside skin.

BUTANE TANKS — 2 with switch over valve and regulator.

LIGHTS — Four side lights, stop and tail light, directional turning lights.

WIRING — 12 gauge plastic coat to all 110 outlets, with circuit breaker, 18 gauge to all six volt system, 2 six volt dome lights standard equipment, six volt car connector.

AWNING RAIL — Regular 15'.

REAR BUMPER — Steel $\frac{1}{4}$ "x2"

STORAGE COMPARTMENT — in center pole.

OVERHEAD CABINETS — Six with shelves.

FORMICA — Table and Sink top with drop leaf extension.

HEATER — Panelray gas or duo-therm oil heater.

SHOWER — Flush type toilet, lavatory and medicine cabinet.

CABINET DOORS — $\frac{3}{4}$ " birch.

CLOTHES CLOSET — 4 $\frac{1}{2}$ ' long with double doors.

BROOM CLOSET

CHEST — Large 4 drawer unit.

PANTRY — Storage with 3 shelves.

VANITY — Storage in front and rear.

SINK — Double porcelain.

WATER HEATER — Electric with pilot light and switch.

WATER STORAGE TANK — with pump.

STOVE — Deluxe apartment size with broiler, clock and timer.

STOVE VENT — Box type with fan.

OUTSIDE COMPARTMENT DOOR.

OUTSIDE ENTRANCE LIGHT.

PULLMAN STEP.

22' CLIPPER MODEL 22 DELUXE

HITCH — Atwood 2" ball and socket. Hoist is Marvel with concealed gears.

CENTER POLE—4"x11 gauge steel tubing.

DOUBLE FLOOR has 6" space, insulated with plastic treated fiber glass.

FLOOR is $\frac{3}{4}$ " plywood with inlaid linoleum covering.

BOTTOM is completely sealed and covered with metal skin.

SPRINGS — Nine leaf automotive steel, attached to 4" x $\frac{1}{4}$ " channel iron.

AXLE — 2" steel, 4000 lb. test with 4" drop axle. Heavy duty bearings and hubs.

BRAKES — Electric.

WHEELS — Heavy duty flat base truck type 15x5.50.

ROOF BOWS or ribs are stamped out heat treated U channel, .040 aluminum.

EXTERIOR SKIN—24 st .032 alclad aluminum.

INSIDE SKIN—.032 satin finish, painted our famous hammertone finish in tinted colors.

DRAPES—Your choice of many colors and trim.

VENETIAN BLINDS — Metal on side windows.

STOVE — Apartment size with broiler.

WATER STORAGE — 14 gallons.

REFRIGERATOR — Comb. elec. or ice.

DOOR—Airplane type, 26" wide, fully insulated with large screen door.

VENTS — Hehr easy action telescoping with removable screens.

WINDOWS — French type opening end windows, 10 opening windows in all, 4 non-opening.

INSULATION — Plasticized fiber glass, with chrome lock tape between all ribs and stringers and inside skin.

BUTANE TANK attached to frame. 5 gals., ICC with regulator.

LIGHTS — Four side lights, stop and tail light, directional turning lights.

WIRING — 12 gauge plastic coat to all 110 outlets, with circuit breaker, 18 gauge to all six volt system, 6 volt dome light standard equipment.

AWNING RAIL — Regular 12'.

REAR BUMPER — Steel, $\frac{1}{4}$ " x 2" .

STORAGE COMPARTMENT in center pole.

OVERHEAD CABINETS — Six, with shelves.

FORMICA TABLE TOP & SINK TOP.

BUTANE WALL HEATER standard equipment. Oil or panel ray, optional at extra cost.

PULLMAN STEP.

22' CLIPPER MODEL 22 WITH SHOWER

SAME AS ABOVE PLUS THESE ADDED FEATURES:

AXLE—2" steel, 4000 lb. test with 4" drop axle. Heavy duty bearings and hubs. Tire size 700x15—8 ply.

REFRIGERATOR—Marvel combination electric & ice.

WINDOWS—French type opening end windows, 10 opening windows in all, 4 non-opening.

CLOTHES CLOSET — 52" long with double doors.

WATER HEATER — Electric with pilot light & switch.

WATER STORAGE TANK—with pump

STOVE—Apartment size with broiler.

SHOWER—Flush type toilet, lavatory & medicine cabinet.

BUTANE TANKS—2 with switch over valve and regulator.

Prices and specifications subject to change without notice.

SILVER STREAK TRAILER CO.

2404 N. Chico, El Monte, California

Phone FOrest 02646

DEALERS