



The Standard of Quality for Over a Quarter of a Century



The Silver Celebration



Through the years, people like yourselves have entrusted their travel home needs and safety to Silver Streak. They have confidence knowing that every feature is truly representative of excellence and precision craftsmanship. Every detail is critically examined to provide you with maximum quality and to re-affirm that you have indeed, invested in the finest travel home in it's class. We feel that's worth celebrating!

The aircraft-style construction, in which the all aluminum roof and side-walls are riveted together,

is a perfect example of Silver Streak's requirement of durability and safety. In addition, the interior appointments are hand selected and color coordinated for optimum comfort.

Silver Streak has established an unprecedented reputation for beauty, dependability and service. But more importantly, Silver Streak has always considered you its greatest responsibility; therefore, it is with a tremendous amount of pride that we offer you our assurance that your Silver Streak travel home will afford

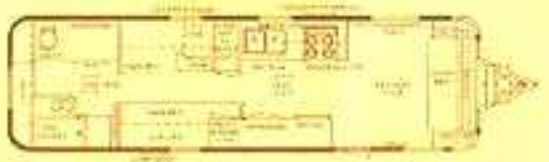
you many rewarding years of exciting and luxurious travels.

When it comes right down to it, your happiness and security is our primary motivation, so protect your travel home investment — Join in on The Silver Celebration!

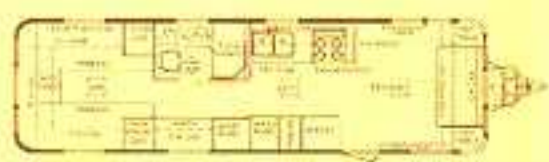
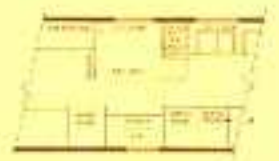
SILVER STREAK



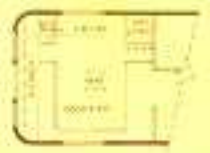
IN 1982 - SINKS AND RANGE ARE REVERSED.



H/B 2600



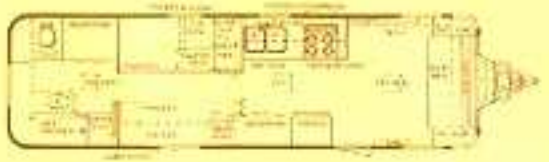
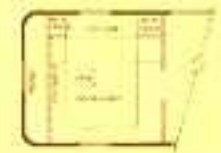
C/B 3000



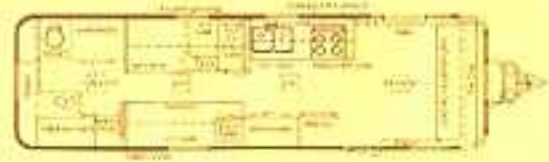
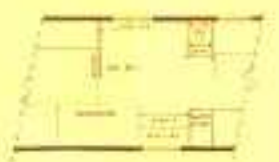
NOTE: Optional Hide-a-Bed will not work in 2600 or 2800 series due to space limitations (can't open it fully).



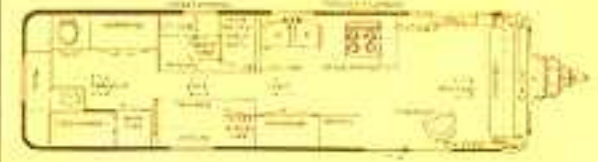
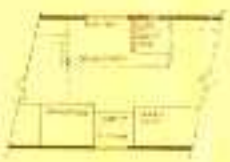
C/B 3200



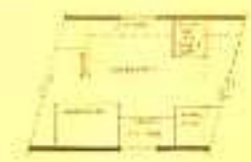
R/B 2800



H/B 3000



R/B 3200



SILVER STREAK FEATURES

AUTHORIZED DEALER



STANDARD CONTINENTAL

- Divan-Bed W/End Cabinets
- Shelf Over Left Livingroom Window
- Water Heater (6 Gal.) W/Electronic Ignition
- Forced Air Heater (34,000 BTU) W/Wall Thermostat (Electronic Ignition)
- Wired For Stereo
- Wired and Reinforced For Air Conditioner
- Systems Control Panel
- 4-Burner Range W/Low Level Oven And Bi-Fold Cover
- Range Hood W/12V Fan And Light
- Double Stainless Steel Sinks W/2 Sink Covers
- 10 Cu. Ft. Double-Door Self-Defrost Combination Gas/Electric Refrigerator
- Twin or Double Bed*
- T.V. Swing Shelf
- Comfort Padded Bedroom Walls And Headboard

- Vented Closets
- 12V Outlet In Bath
- Marine-Type Toilet W/Separate Holding Tank
- House Type Lavatory W/Overhead Medicine Cabinet
- Built-In Dirty Clothes Hamper (Hear Bath Models Only)
- 40-Gal. Fresh Water Tank W/Demand Pump
- Fiberglass Tub & Shower W/Folding Shower Door
- 12V Light In Shower
- Roof Mounted T.V. Antenna
- Radio Aerial
- Roof Vents, Front And Bath W/Exhaust Fans
- Folding 2 Stage Entrance Door Step

- Assist Handle Entrance Door
- Tandem Axle W/4 Wheel Electric Brakes
- 4 — 855 x 15 ST (Load Range C) White Sidewall Tires W/Steel Wheels
- Two 7 1/2-Gal. LPG Steel Tanks
- Patio Awning Rail
- Rock Guards Over Front Window
- Corner Windows With Travel Covers
- Enclosed Sewer Hose Carrier
- Water Pressure Regulator
- 12V Battery W/Box
- 40-AMP Converter W/Built-In Battery Charger
- Porch Light
- Fire Extinguisher
- Custom Closet Door Mirrors
- Tinted Window Glass
- 12V Power Helist

OPTIONAL SUPREME PACKAGE

- Dead Bolt Door Lock
- Bedspread(s)
- Wire For Telephone
- 4 Shock Absorbers
- Dual 12V Batteries W/Box
- Air Conditioner 13,500 BTU W/Heat Strip
- Stereo W/AM-FM Radio And 8 Track Tape Deck W/4 Speakers
- Patio Awning 20' x 8' Automatic Roll-Up
- Two 10-Gal. Aluminum LPG Tanks W/Automatic Regulator

- Spare Tire And Wheel (Mounted In Trunk)
- Entrance Door Step Light
- Digital Clock
- Water Purifier
- 4 — 855 x 15 ST (Load Range C) White Sidewall Tires W/Mag Wheels
- 4 Built-In Stabilizing Jacks
- 2 Folding Chairs
- Door Chimes
- Supreme Exterior Trim Package

SILVER STREAK

TRAILER COMPANY, INC.
2319 N. Chico Avenue,
South El Monte, CA 91733
(213) 444-2646 253-6372