

# STERLING

by *SILVER STREAK*









***The  
Standard  
of Quality  
for Over  
Forty  
Years!***

*Over forty years ago, Silver Streak began the assembly of its first travel trailer, using aircraft design construction methods which became the hallmark of its now famous line of quality recreation vehicles. Ever since, the Silver Streak name has enjoyed a consistent reputation for uncompromising quality in its products. Silver Streak owners overwhelmingly praise their travel trailers as the finest in the world.*

*The Sterling line of models today is everything a Silver Streak should be, and yet remains as individual as its master. From the windwept exterior lines to the bright colors of its living areas, Sterling combines the ultimate in evolutionary progress in its products, unexcelled in value.*

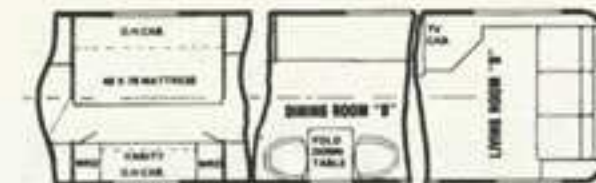
*If you are the type of discriminating individual who is unwilling to compromise on matters of personal taste and lasting value, we invite you to request an appointment for a private showing of a Sterling at your earliest convenience.*

**SILVER STREAK**

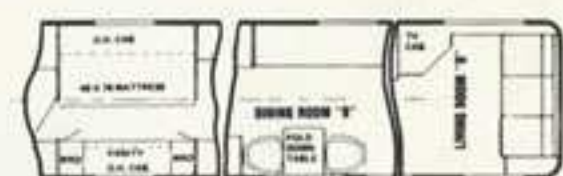




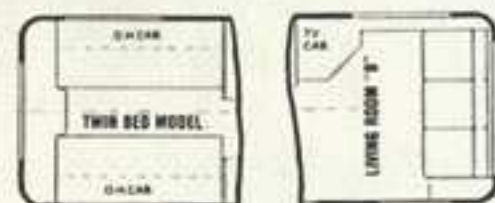
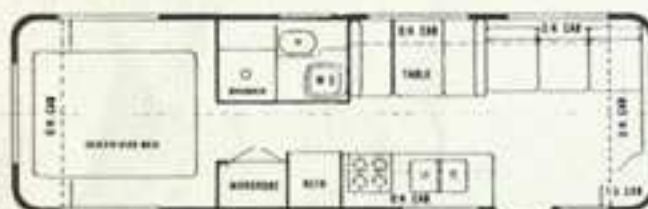
29' R/B



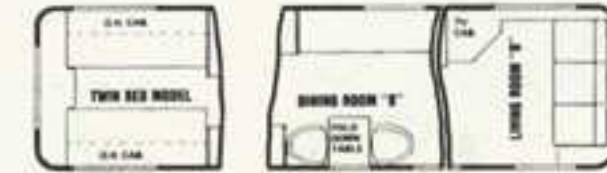
32' R/B



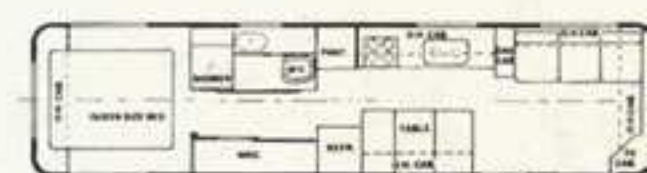
35' R/B



29' C/B



32' C/B



35' C/B

### STERLING STANDARD EQUIPMENT

12" Electric Brakes (All Wheels)  
 Aluminum Mag Wheels (4)  
 White Wall Tires  
 Spare Tire & Wheel  
 Shock Absorbers  
 Anti-Drag Casters  
 4 Stabilizer Jacks  
 Double Fold-Out Entry Step  
 Sewer Hose Storage Compartment  
 Lockable Rear Trunk  
 Fully-Enclosed Undercarriage

Power Hitch Jack  
 Enclosed Storage Compartment

2 Deep-Cycle Batteries  
 2 110-Volt Outside Receptacles  
 Security Lights (All 4 Sides)  
 Patio Awning  
 Front Window Travel Cover  
 Black Radius Tinted Jalousie Windows  
 Entrance Light  
 Dead-Bolt Lock

RM 3802 AES Refrigerator  
 35,000-BTU Furnace  
 13,500-BTU Air Conditioner  
 Built-In Microwave Oven  
 4-Burner Range w/Oven

Telephone Wiring & Outlet  
 4 30-Watt Recessed Florescent Lights  
 3 Ceiling Vents w/Fan  
 Stainless Steel Kitchen Sink  
 2 15-Watt Florescent Lights  
 4 Decorative Lights  
 3 High-Line Upholstery Choices  
 Deluxe "Stainmaster" Carpet Throughout  
 Hand-Stained Oak Cabinets & Doors  
 Decorator Paneling Throughout  
 Brass Bathroom Fixtures & Accessories  
 Fold-Out Sleeper Sofa w/Drawer Underneath  
 Innerspring Mattresses  
 Quilted Bedspreads & Wall Comforters

*In our continuing effort to improve the Silver Star arrangements and specifications are subject to change without notice.*

**OPTIONS AVAILABLE:**  
 (See Price List for Specifics)  
 Half Wardrobe  
 TV Cabinet w/Slideout (1)  
 Aluminum Spare Wheel  
 (Exchange for Steel)

CB Antenna  
 Swivel Barrel Chair  
 Window Awnings  
 Storm Windows  
 (All Models)

**SILVER STREAK**

AUTHORIZED DEALER

SILVER STAR RV, Inc.  
 4741 Marietta Avenue



SILVER STAR R.V. INC. • 4741 Murrieta St., Chino, CA 91710-5156 • (714) 591-0416

STERLING SPECIFICATIONS

LENGTH OVERALL	29'	32'	35'
WIDTH OVERALL	96"	96"	96"
HEIGHT OVERALL	115"	115"	115"
INTERIOR WIDTH	92"	92"	92" 7.6"
INTERIOR HEIGHT	80"	80"	80" 6.6"
FLOOR HEIGHT	26"	26"	26"
FIRST STEP	12"	12"	12"
SECOND STEP	18"	18"	18"
DRY WEIGHT	5,900#	6,400#	6,800#
HITCH WEIGHT	720#	800#	850#
GROSS VEHICLE WEIGHT RATING	9,000#	9,000#	9,000#
CHASSIS MAIN RAILS:	.188x2x6" BOX TUBE + .125x2x2" BOX TUBE		
CROSSMEMBERS:	14 GA STEEL 8" C-CHANNEL 24" O.C.		
AXLES:	TORQUE AXLE 4500# CAP. EACH		
WHEELS:	ALUMINUM ALLOY 2100# CAP. EACH		
TIRES:	RADIAL ST-225-75R15 D RATED 2540 EACH		
EXTERIOR:	.032 CLEAR ANODIZED ALUMINUM		
RIB STRUCTURE:	2" ALUMINUM U-CHANNEL INTERLOCKED AND WELDED 24" O.C.		
INSULATION:	FIBERGLASS BATTING R-7		
WATER TANK:	35 GALLON (SECOND TANK OPTIONAL)		
WASTE TANK:	26 GALLON		
GRAY TANK:	26 GALLON		

SPECIFICATIONS ARE SUBJECT TO CHANGE WITHOUT NOTICE.



PLASTIC COAT  
12" ELECTRIC BRAKES (ALL WHEELS)  
ALUMINUM MAG WHEELS  
WHITE WALL TIRES  
SPARE TIRE & MAG WHEEL  
TORQUE AXLES  
ANTI-DRAG CASTERS  
4 STABILIZER JACKS  
DOUBLE FOLD OUT ENTRY STEP  
SEWER HOSE STORAGE COMPARTMENT  
LOCKABLE REAR TRUNK  
FULLY ENCLOSED UNDERCARRIAGE  
POWER HITCH JACK  
ENCLOSED PROPANE COMPARTMENT  
2 40# ALUMINUM LPG BOTTLES  
50 AMP CONVERTER W/BATTERY CHARGER  
35 GAL. WATER TANK  
26 GAL. GREY WATER TANK  
26 GAL. BLACK WATER TANK  
WATER PRESSURE REGULATOR  
2 EA 6 VOLT DEEP CYCLE BATTERIES  
2 110-VOLT OUTSIDE RECEPTACLES  
SECURITY LIGHTS (ALL 4 SIDES)  
20' A&E ELITE 9000 PATIO AWNING  
FRONT WINDOW TRAVEL COVER  
BLACK RADIUS TINTED JALOUSIE WINDOWS  
ENTRANCE LIGHT  
DEAD BOLT LOCK  
LARGE BOWL CHINA TOILET W/SPRAY  
SPARE TIRE CARRIER IN UNDERBELLY ( CENTER BATH MODELS ONLY )  
RM 3807.2 AES REFRIGERATOR  
35,000 BTU FURNACE  
13,500 BTU LOW PROFILE AIR CONDITIONER  
BUILT-IN MICRO WAVE OVEN  
4-BURNER RANGE W/OVEN  
BI-FOLD LIFT COVER (BRUSHED CHROME)  
6 GAL GAS-ELECTRIC WATER HEATER WITH REIGNITER  
RANGE HOOD W/FAN, LIGHT & MONITOR PANEL  
AM/FM STEREO W/CASSETTE & 4 SPEAKERS  
T.V. ANTENNA W/POWER BOOSTER  
2 ANTENNA AND 2 CABLE T.V. OUTLETS  
TELEPHONE WIRING AND OUTLET  
4-30 WATT RECESSED FLOURESCENT LIGHTS  
3 REMOTE OPERATED CEILING VENTS W/FAN  
STAINLESS STEEL KITCHEN SINK  
1-15 WATT FLOURESCENT LIGHT  
7 DECORATIVE LIGHTS  
3 HIGH LINE UPHOLSTERY CHOICES  
DELUXE "STAINMASTER" CARPET THROUGHOUT  
HAND STAINED OAK CABINETS & DOORS  
DECORATOR PANELING THROUGHOUT  
BRASS BATHROOM FIXTURES & ACCESSORIES  
FOLD OUT SLEEPER SOFA W/DRAWER UNDERNEATH  
INNERSPRING MATTRESSES  
QUILTED BEDSPREADS & WALL COMFORTERS  
PLEATED SHADES THROUGHOUT  
MIRRORED WARDROBE DOORS

SAFETY GROUP: BREAKAWAY SWITCH, FIRE EXTINGUISHER & SMOKE DETECTOR

1995 STERLING PRICE SHEET

8/ 1/94

SIZE	BATH		BEDRM.		LIV.RM.		DIN.RM.		UPHOLSTERY			LIST PRICE
	R/B	C/B	T	D	A	B	A	B	B	S	M	
29'	---	---	---	---	---	---	---	---	---	---	---	\$ 43,300.00
32'	---	---	---	---	---	---	---	---	---	---	---	\$ 44,700.00
35'	---	---	---	---	---	---	---	---	---	---	---	\$ 46,700.00
BASE PRICE											\$ _____	

OPTIONS

HALF WARDROBE.....	\$ 320.00	_____
T.V. CABINET WITH SLIDEOUT SHELF.....	\$ 385.00	_____
SOLAR BATTERY CHARGER (5 WATT) W/CONTROL PANEL.....	\$ 172.00	_____
C.B. ANTENNA.....	\$ 85.00	_____
SWIVEL BARREL CHAIR.....	\$ 320.00	_____
ELITE WINDOW AWNINGS 30" TO 54".....	\$ 185.00	_____
ELITE WINDOW AWNING 66".....	\$ 212.00	_____
ELITE WINDOW AWNING 11'.....	\$ 335.00	_____
STORM WINDOWS (ALL MODELS).....	\$ 575.00	_____
AIR CONDITIONER HEAT STRIP.....	\$ 85.00	_____
6000 BTU CAT HEATER INSTALLED.....	\$ 450.00	_____
5 KW GENERATOR W/PROPANE CONVERSION & REMOTE START.....	\$4045.00	_____
WATER FILTER AND FAUCET.....	\$ 125.00	_____
UPGRADE TO DAY AND NIGHT PLEATED SHADES.....	\$ 275.00	_____

NOTE: OTHER LENGTHS AND OPTIONS ARE AVAILABLE BY REQUEST.

PRICES AND SPECIFICATIONS ARE SUBJECT TO CHANGE WITHOUT NOTICE. FACTORY CUSTOMER PICK-UPS ARE WELCOME MOND. THRU THURS. BY APPOINTMENT.

PLEASE CALL US IF YOU HAVE ANY QUESTIONS.

TOTAL	\$ _____
TAX	\$ _____
LICENSE	\$ _____
FREIGHT	\$ _____
C.P.U.	\$ _____

CUSTOMER NAME \_\_\_\_\_

ADDRESS \_\_\_\_\_

CITY & STATE \_\_\_\_\_

ZIP \_\_\_\_\_ .PHONE \_\_\_\_\_

GRAND TOTAL \$ \_\_\_\_\_

=====

FOR STANDARD EQUIPMENT SEE BACK OF PAGE